

Electromagnetic Vibrator VEM



ELECTRICAL SPECIFICATION :

MODEL	POWER (VA)	PHASE	VOLTS (Volt)	FREQUENCY	CURRENT (Amps)	DRIVE FREQUENCY (rpm)
VEM 1	53	SINGLE	220	50	0,10	3000 – 6000
VEM 2	74	SINGLE	220	50	0,22	3000 – 6000
VEM 3	115	SINGLE	220	50	0,42	3000 – 6000
VEM 4	138	SINGLE	220	50	0,65	3000 – 6000

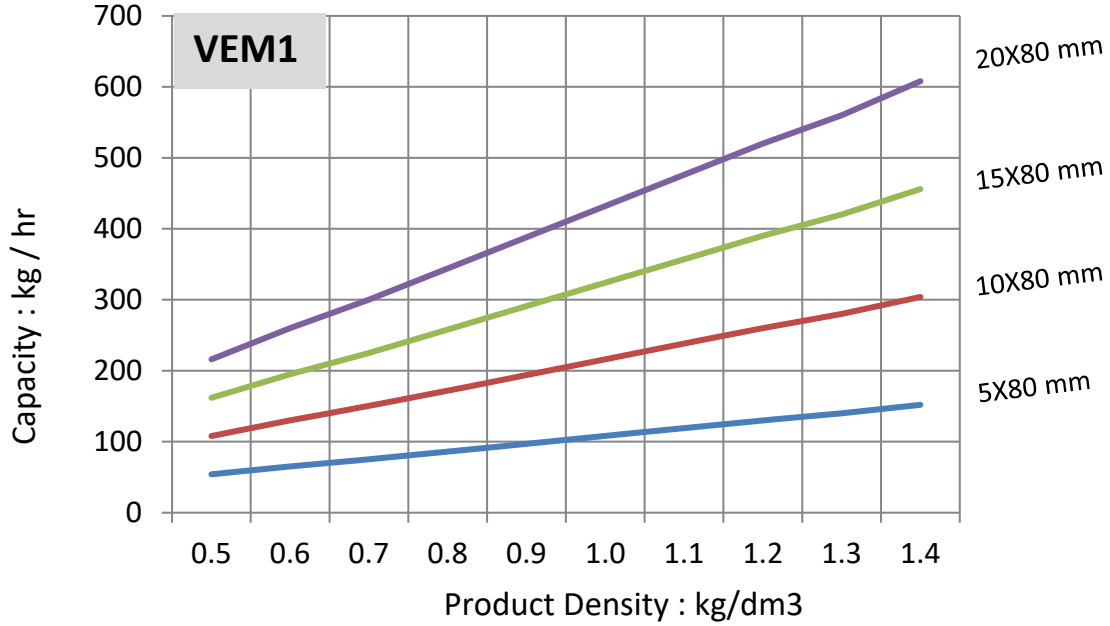
MECHANICAL SPECIFICATION :

MODEL	SPRING FRONT Quantity x mm	SPRING REAR Quantity x mm	AIR GAP mm	ACCELERATION g	SPEED Cm/sec	AMPLITUDE mm
VEM 1	2 X 0,75	2 X 1,25	1,5 mm 360°	6,80	7,15	0,40
VEM 2	3 x 1,25	2 x 1,75	2,25 mm 540°	2,70	8,45	0,60
VEM 3	2 x 1,75 1 x 2,25	1 x 1,75 2 x 2,25	2,25 mm 540°	2,50	7,80	0,70
VEM 4	3 x 2,25	3 x 2,50	2,25 mm 540°	2,50	7,50	0,80

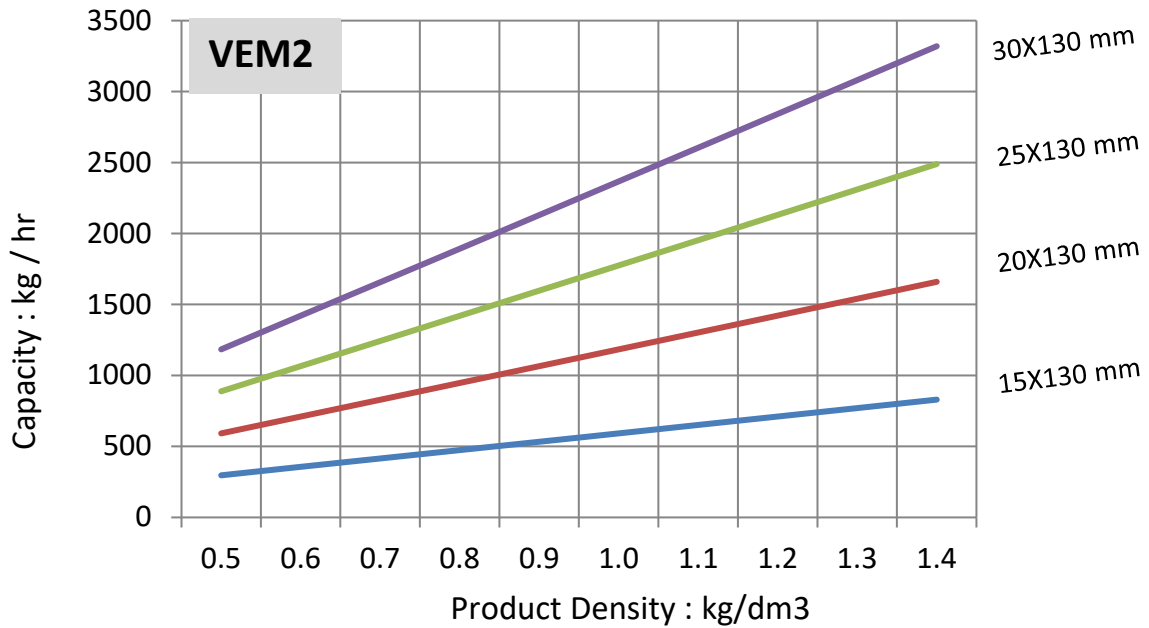
CAPACITY SPECIFICATION :

MODEL	WEIGHT VIBRATOR kg	TRAY DIM. mm	TRAY WEIGHT kg	CAPACITY Tons / hour	CAPACITY Lt / min	SPEED Cm/sec
VEM 1	4,6	40x80x300	0 – 1,5	0,6	6	7,15
VEM 2	13,1	60x130x500	0 – 3,0	2,0	20	8,45
VEM 3	19,1	80x150x700	0 – 7,5	5,0	52	7,80
VEM 4	26,2	80x200x800	0 – 10,0	7,0	73	7,50

CAPACITY, TRAY WIDTH, PRODUCT DENSITY

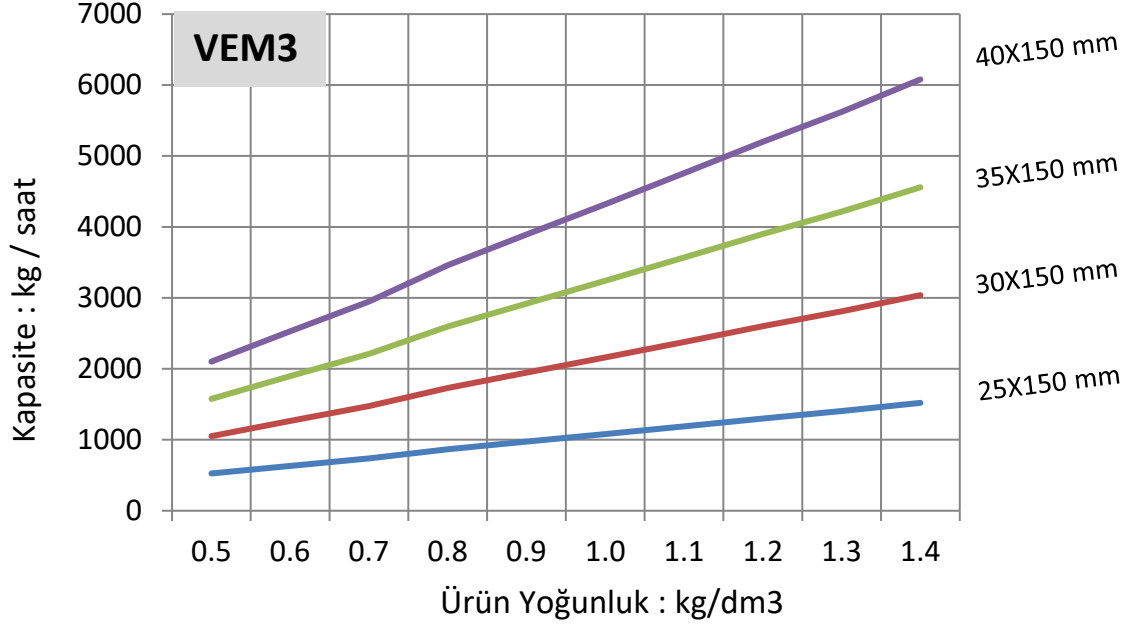


- VEM1 Electromagnetic linear feeder with standard tray dimensions :
- Height : 40 mm , width: 80 mm , lenght : 300 mm
- The above figure shows the variation of the tray capacity, depending on the height of product..

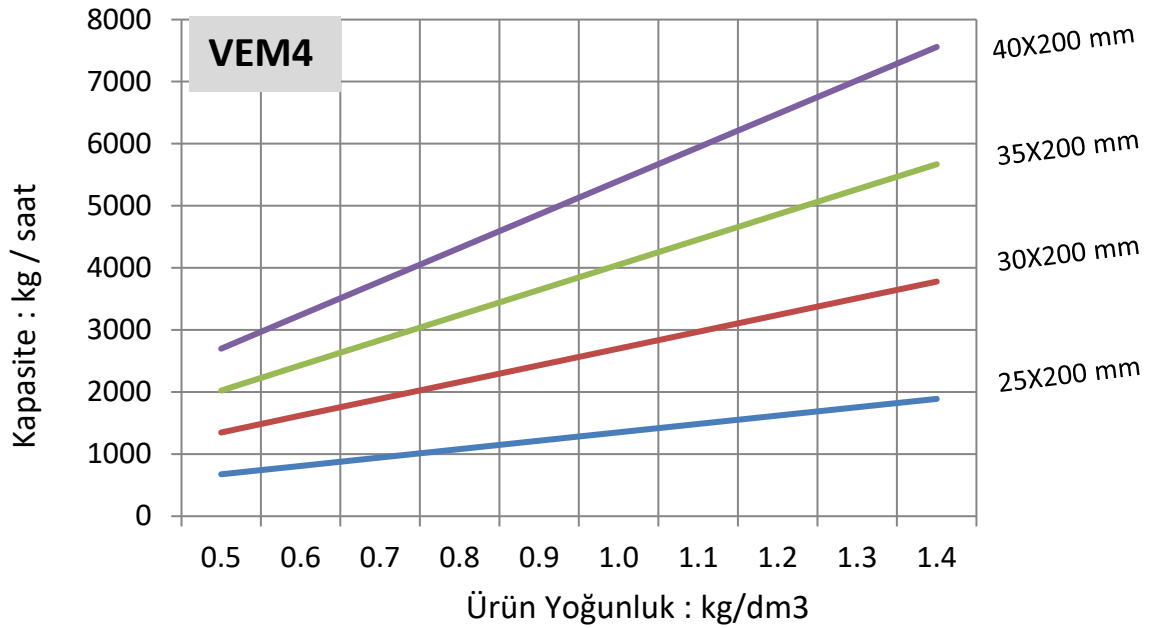


- VEM2 Electromagnetic linear feeder with standard tray dimensions
- Height : 60 mm , width: 130 mm , lenght : 500 mm
- The above figure shows the variation of the tray capacity, depending on the height of product..

CAPACITY, TRAY WIDTH, PRODUCT DENSITY

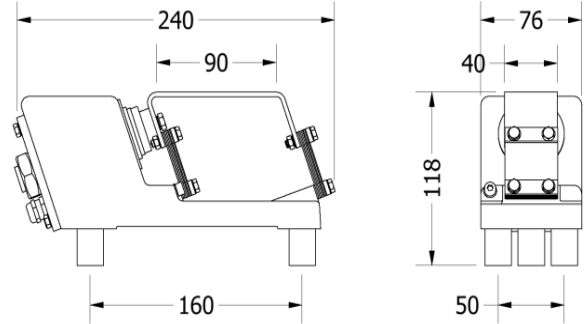
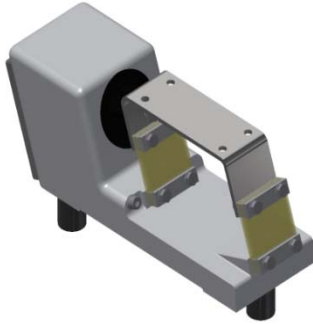


- VEM3 Electromagnetic linear feeder with standard tray dimensions :
- Height : 80 mm , width: 150 mm , lenght : 700 mm
- The above figure shows the variation of the tray capacity, depending on the height of product..



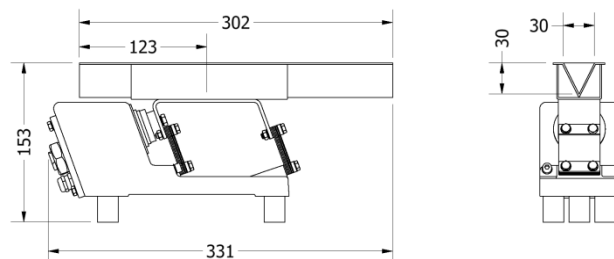
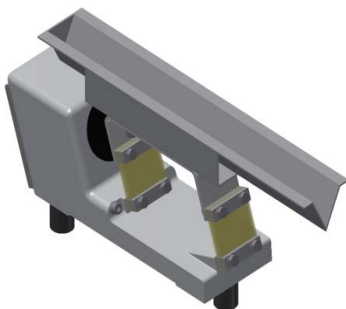
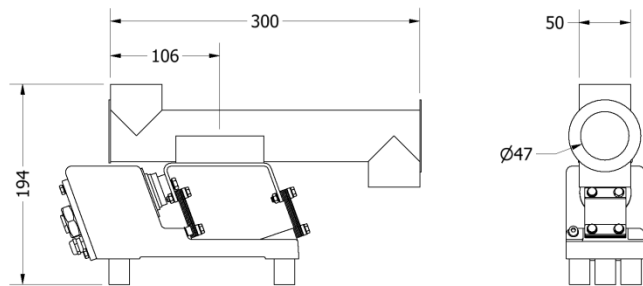
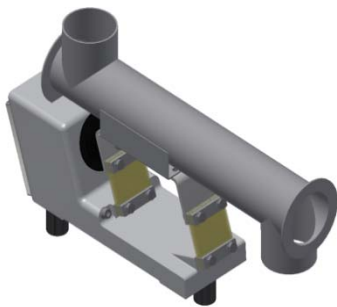
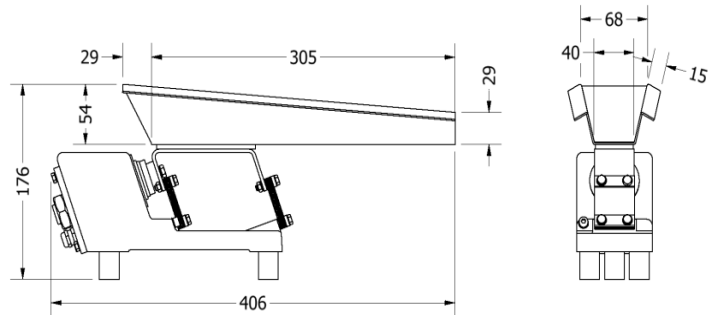
- VEM4 Electromagnetic linear feeder with standard tray dimensions
- Height : 80 mm , width: 200 mm , lenght : 800 mm
- The above figure shows the variation of the tray capacity, depending on the height of product..

VEM 1 ELECTROMAGNETIC VIBRATOR

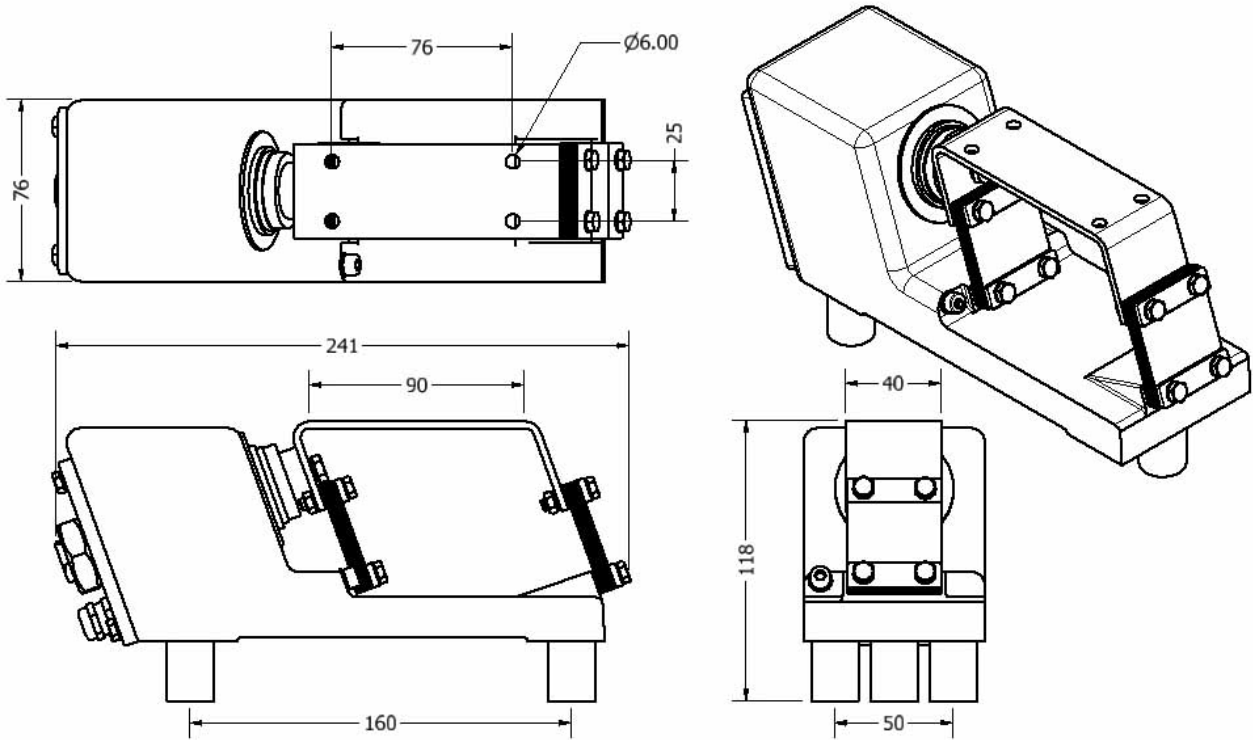


- All metallic parts in 304 stainless steel,
- Fibreglass springs lifetime guaranteed,
- Heat resistant sealings, (250° C)
- Water and heat resistant coil
- (with polyurethane resin 200° C)
- (with polypropylene housing 120° C)
- Single screw for air gap adjustment
- High or slow speed selection,
- Frequency range 3000 rpm – 6000 rpm
- Sensitive adjustment with potentiometer

Power	: 13 Watt, 53 VA
Voltaj	: 220 V, 50 Hz
Current	: 0,10 Amps
Weight	: 4,6 kg
Capacity	: 0,6 ton/hour
Max. Tray Weight	: 2.0 kg

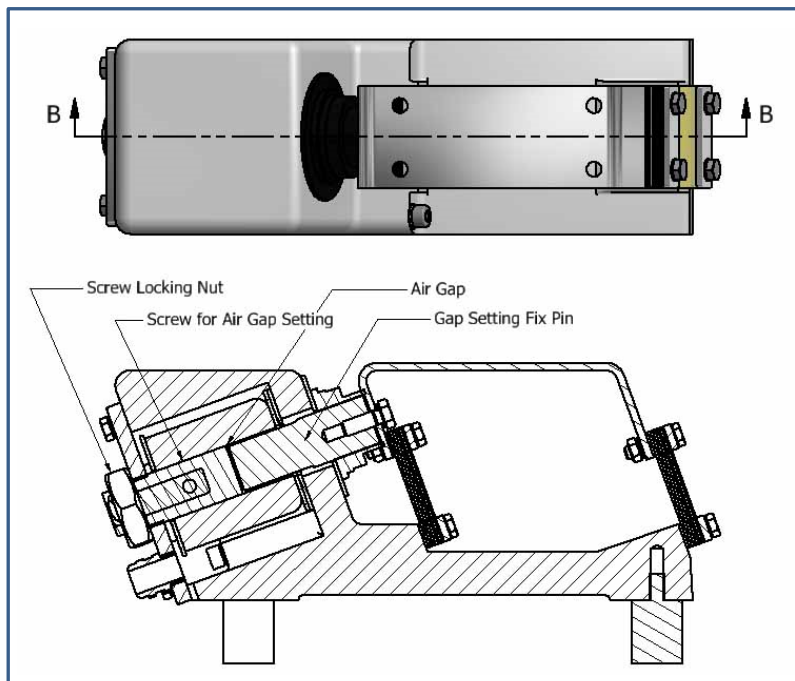


VEM1 TECHNICAL DIMENSIONS:

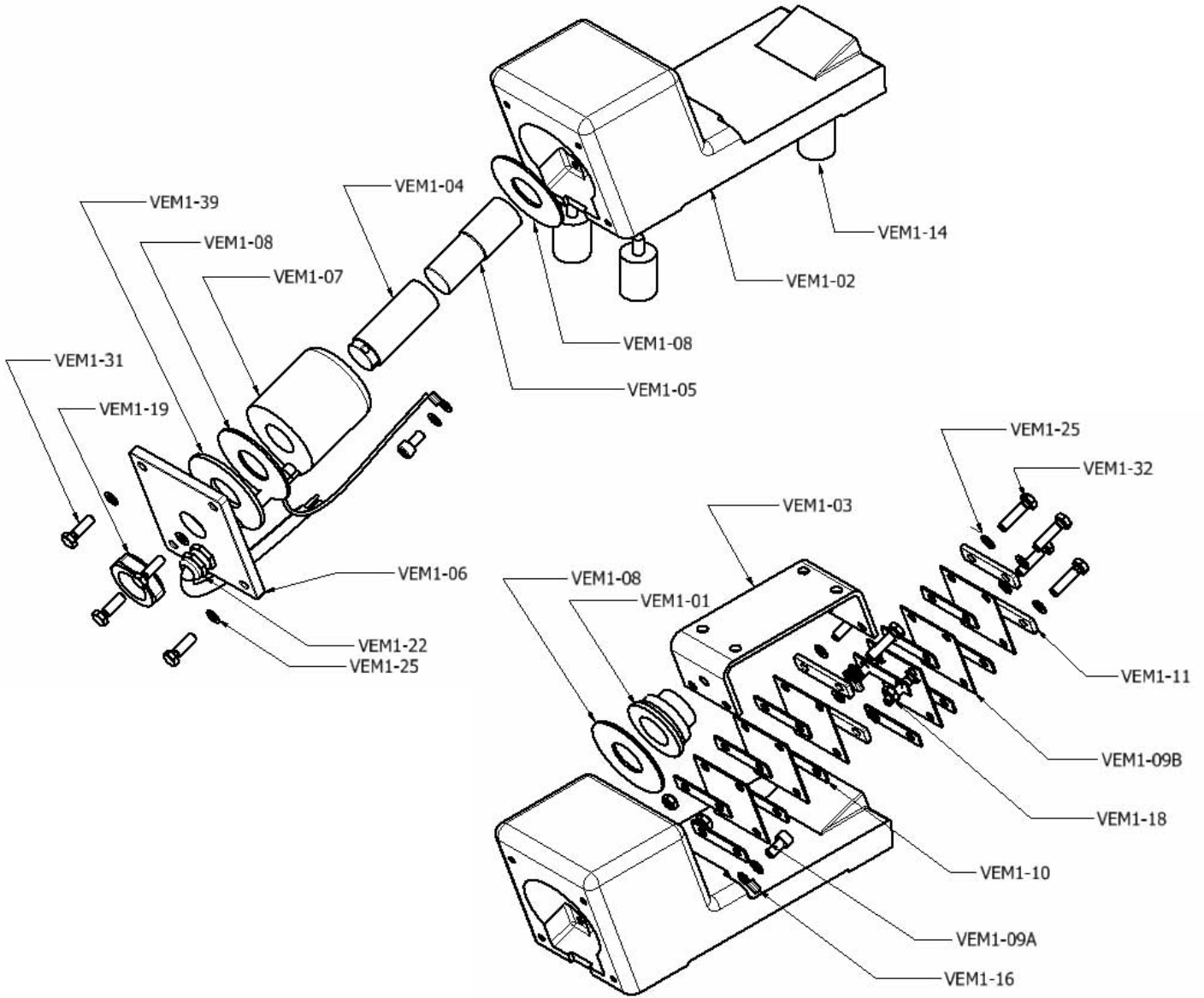


AIR GAP ADJUSTMENT :

- Depending on product and its speed of feeding, air gap adjustment is very important.
- The air gap is the spacing that exists between the armature and magnet assembly.
- Back side of vibrator there is a nut. Loose the nut before starting adjustment.
- Screw the screws clockwise, until it comes to the end of the stroke and so right in time with the drive. Loosen the screw counter clockwise, with reference to table ' Mechanical Spec.', determine the adequate air gap for your feeder. So turn the screw so many times as necessary to obtain the required air gap. Tighten the nut to maintain the set screw tightly.



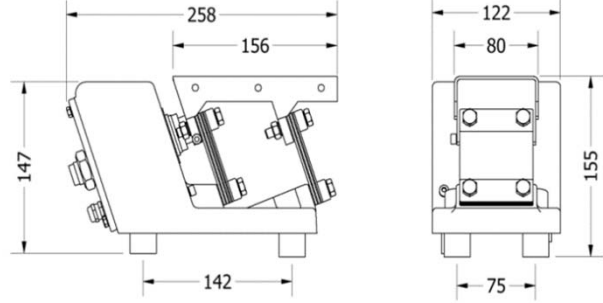
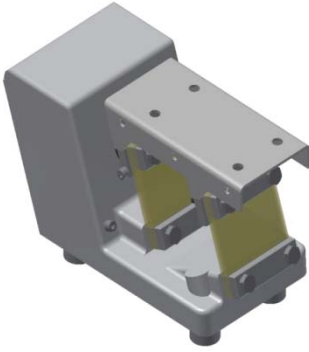
VEM1 PARTS :



ITEM	DESCRIPTION	QUANTITY
VEM1-01	Silicon Reduction	1
VEM1-02	Static Equipment, Body	1
VEM1-03	Trough	1
VEM1-04	Screw for Air Gap Setting	1
VEM1-05	Gap Setting Fix Pin	1
VEM1-06	Seating Coil Cover	1
VEM1-07	Coil	1
VEM1-08	Silicon Ring	3
VEM1-09	Leaf Assembly	4
VEM1-10	Leaf Space Plate	12
VEM1-11	Leaf Fixing Plate	4
VEM1-14	Antivibrating Leg	3

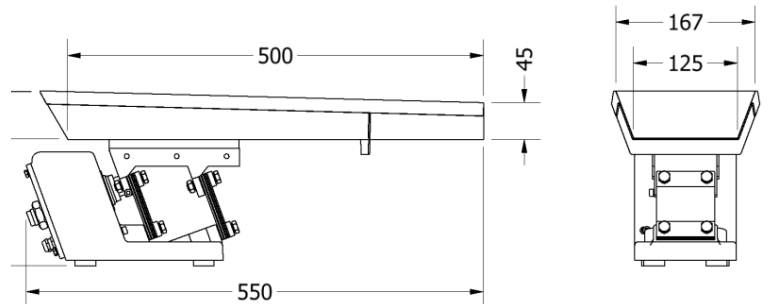
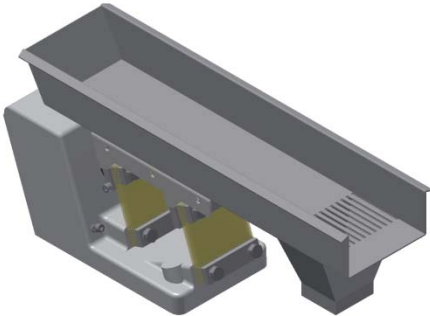
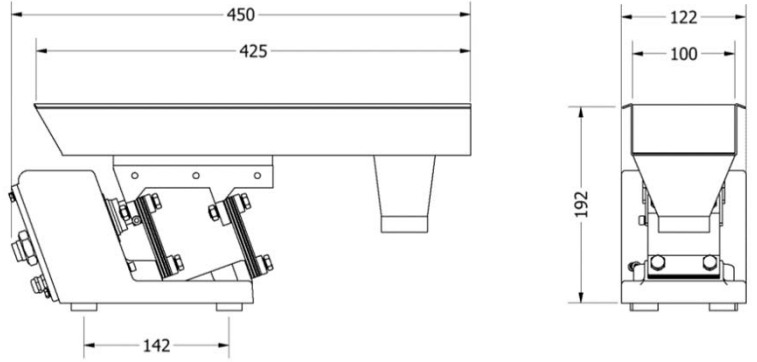
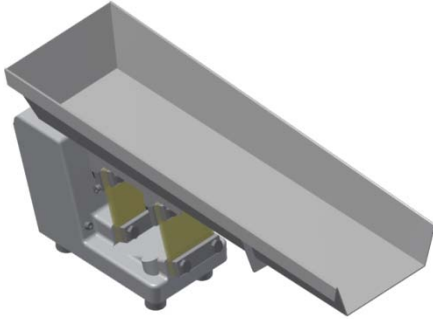
ITEM	DESCRIPTION	QUANTITY
VEM1-16	Anti Electric Cable	1
VEM1-18	M5 Nut	4
VEM1-19	M20 Nut	1
VEM1-21	M6 x 16 Bolt	1
VEM1-22	Pg 7 Cable Gland	1
VEM1-23	M6 Spring Washer	1
VEM1-24	M5x8 Bolt	2
VEM1-25	M5 Spring Washer	17
VEM1-31	M5x16 Bolt	4
VEM1-32	M5x20 Bolt	8
VEM1-39	Coil Space Ring	1

VEM 2 ELECTROMAGNETIC VIBRATOR

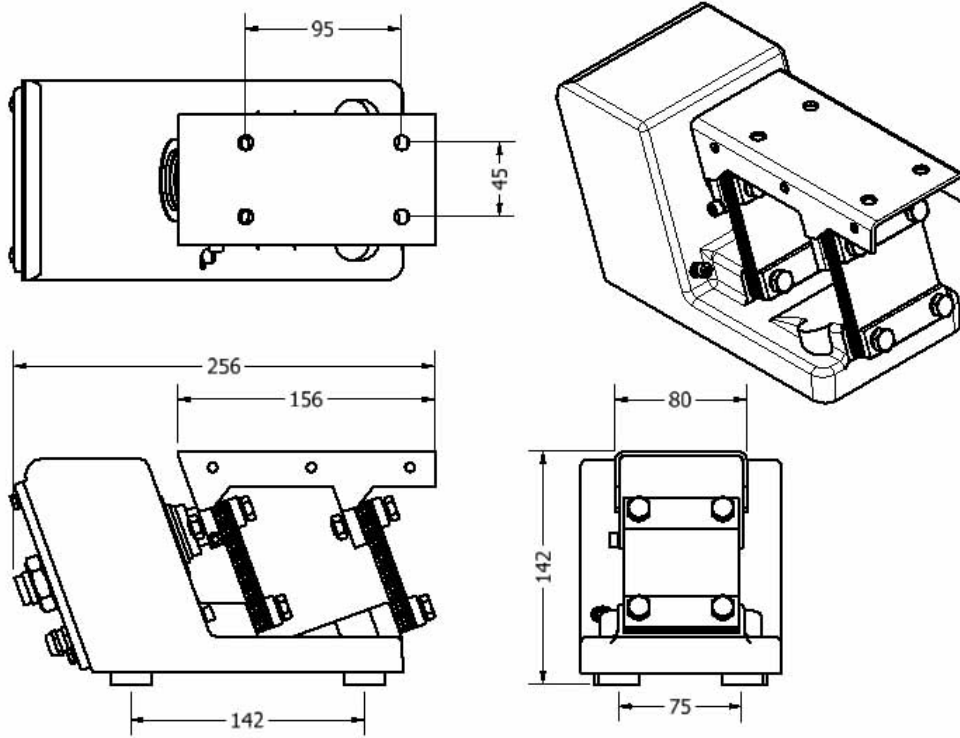


- All metallic parts in 304 stainless steel,
- Fibreglass springs lifetime guaranteed,
- Heat resistant sealings, (250° C)
- Water and heat resistant coil
- (with polyurethane resin 200° C)
- (with polypropylene housing 120° C)
- Single screw for air gap adjustment
- High or slow speed selection,
- Frequency range 3000 rpm – 6000 rpm
- Sensitive adjustment with potentiometer

Power	: 37 Watt, 74 VA
Voltaj	: 220 V, 50 Hz
Current	: 0,22 Amps
Weight	: 13 kg
Capacity	: 2.0 ton/hour
Max. Tray Weight	: 3.0 kg

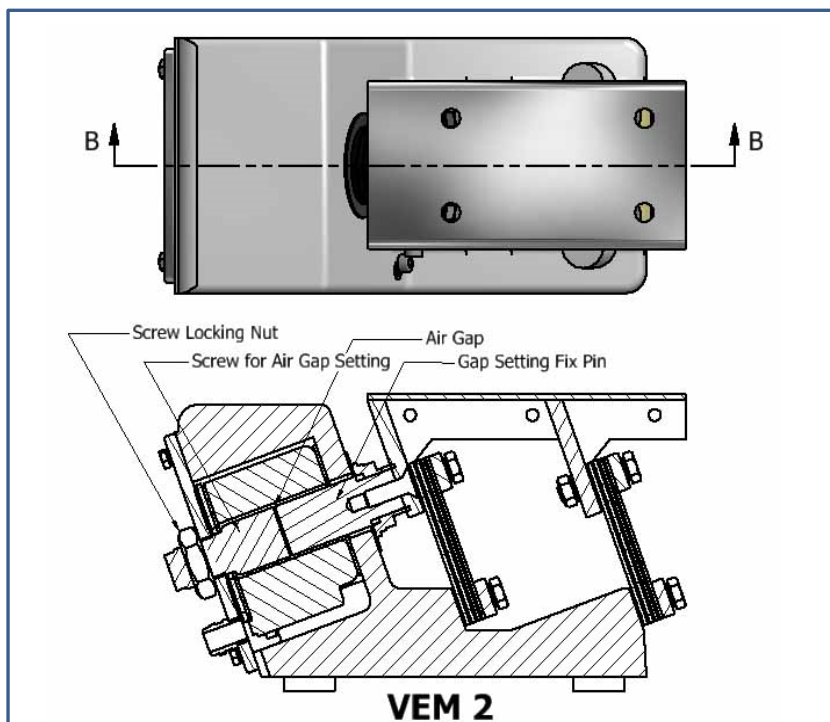


VEM 2 TECHNICAL DIMENSIONS :

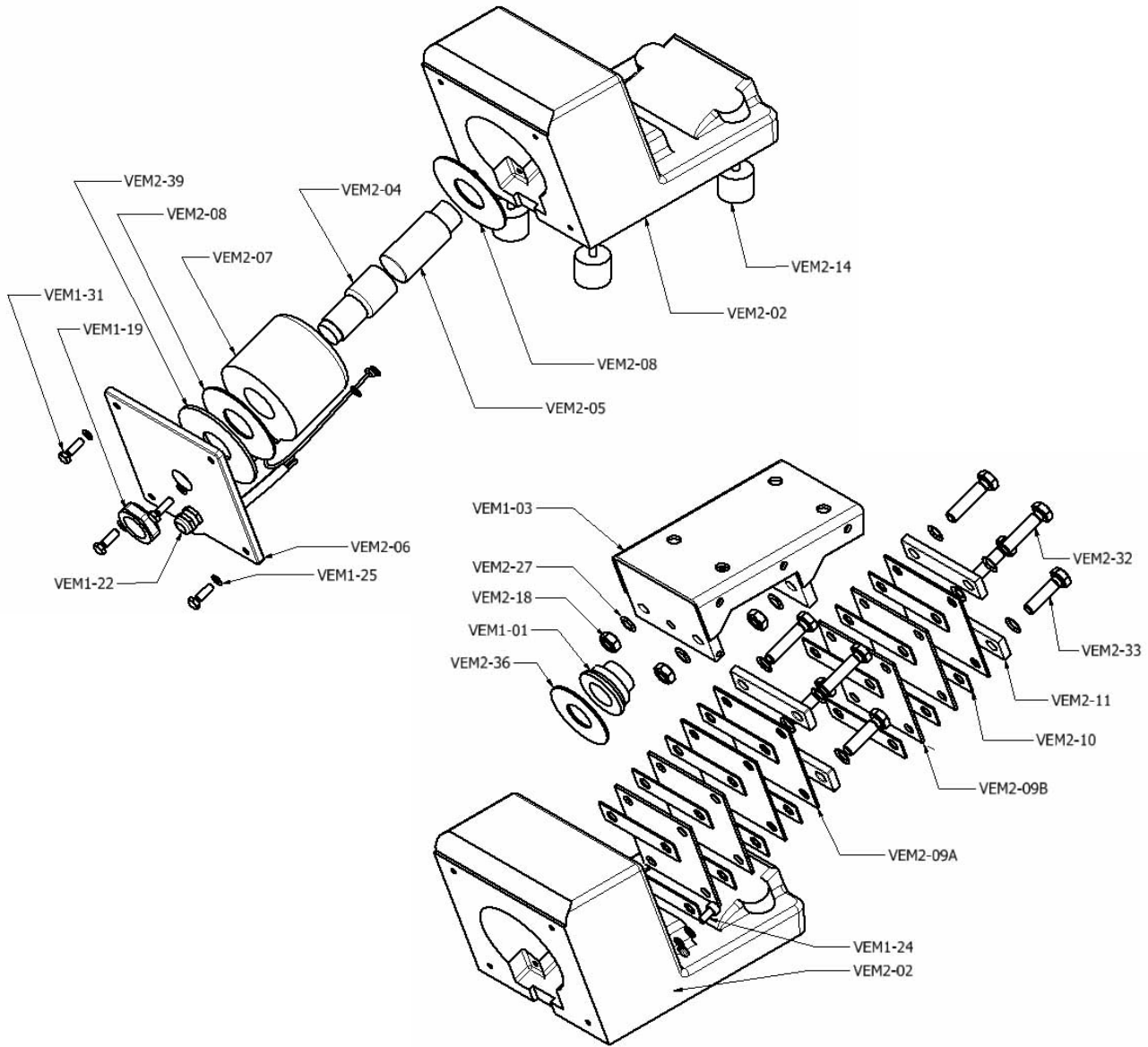


AIR GAP ADJUSTMENT :

- Depending on product and its speed of feeding, air gap adjustment is very important.
- The air gap is the spacing that exists between the armature and magnet assembly.
- Back side of vibrator there is a nut. Loose the nut before starting adjustment.
- Screw the screws clockwise, until it comes to the end of the stroke and so right in time with the drive. Loosen the screw counter clockwise, with reference to table ' Mechanical Spec.', determine the adequate air gap for your feeder. So turn the screw so many times as necessary to obtain the required air gap. Tighten the nut to maintain the set screw tightly.



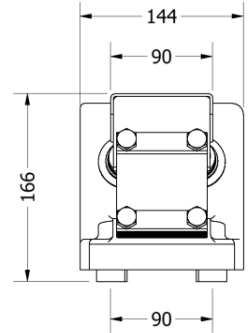
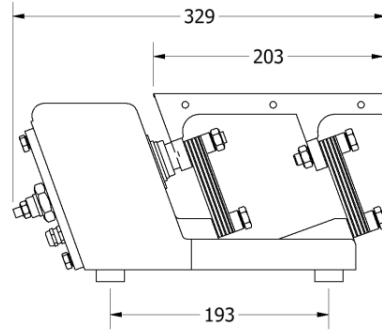
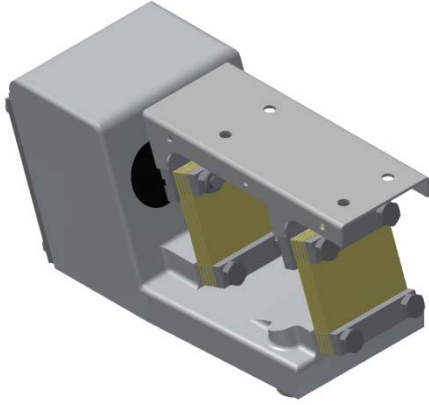
VEM 2 PARTS :



ITEM	DESCRIPTION	QUANTITY
VEM1-01	Silicon Reduction	1
VEM2-02	Static Equipment, Body	1
VEM2-03	Trough	1
VEM2-04	Screw for Air Gap Setting	1
VEM2-05	Gap Setting Fix Pin	1
VEM2-06	Seating Coil Cover	1
VEM2-07	Coil	1
VEM2-08	Silicon Ring	3
VEM2-09	Leaf Assembly	5
VEM2-10	Leaf Space Plate	14
VEM2-11	Leaf Fixing Plate	4
VEM2-14	Antivibrating Leg	4

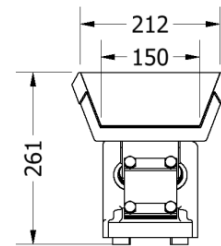
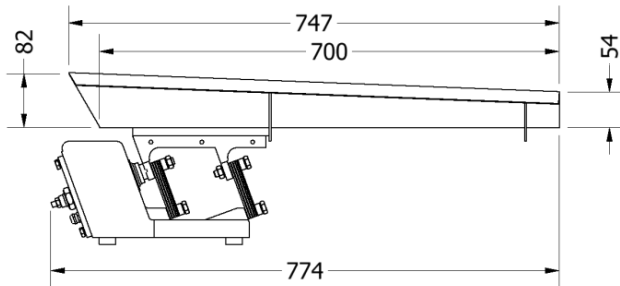
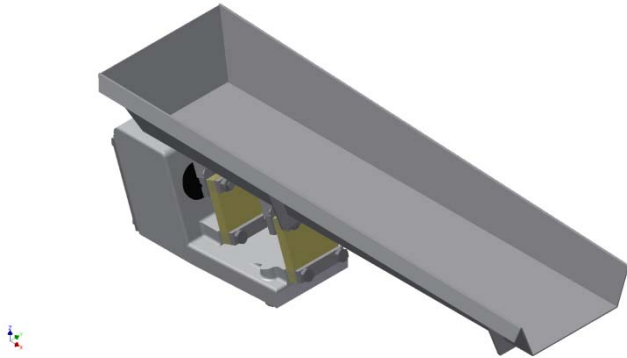
ITEM	DESCRIPTION	QUANTITY
VEM1-16	Anti Electric Cable	1
VEM2-18	M8 Nut	4
VEM1-19	M20 Nut	1
VEM2-21	M8 x 25 Bolt	1
VEM1-22	Pg 7 Cable Gland	1
VEM1-24	M5x8 Bolt	2
VEM1-25	M5 Spring Washer	5
VEM2-27	M8 Spring Washer	4
VEM1-31	M5x16 Bolt	4
VEM2-32	M8x35 Bolt	4
VEM1-33	M8x30 Bolt	4
VEM1-36	Silicon Outer Ring	1
VEM2-39	Coil Space Ring	1

VEM 3 ELECTROMAGNETIC VIBRATOR

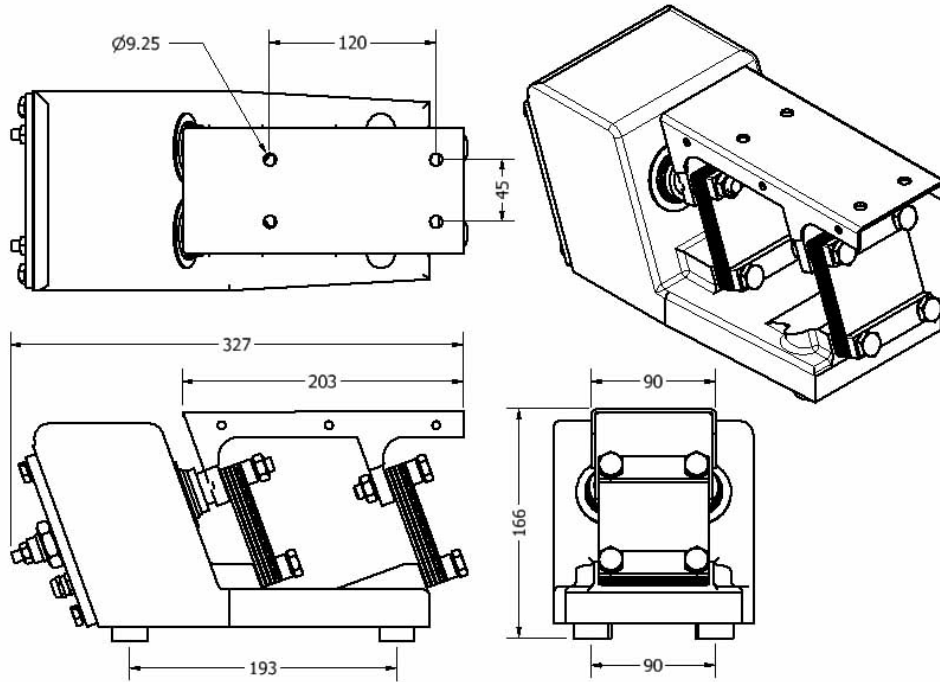


- All metallic parts in 304 stainless steel,
- Fibreglass springs lifetime guaranteed,
- Heat resistant sealings, (250° C)
- Water and heat resistant coil
(with polyurethane resin 200° C)
(with polypropylene housing 120° C)
- Single screw for air gap adjustment
- High or slow speed selection,
- Frequency range 3000 rpm – 6000 rpm
- Sensitive adjustment with potentiometer

Power	:	46 Watt, 115 VA
Voltaj	:	220 V, 50
Current	:	0,42 Amps
Weight	:	19 kg
Capacity	:	5 ton/hour
Max. Tray Weight	:	7,5kg

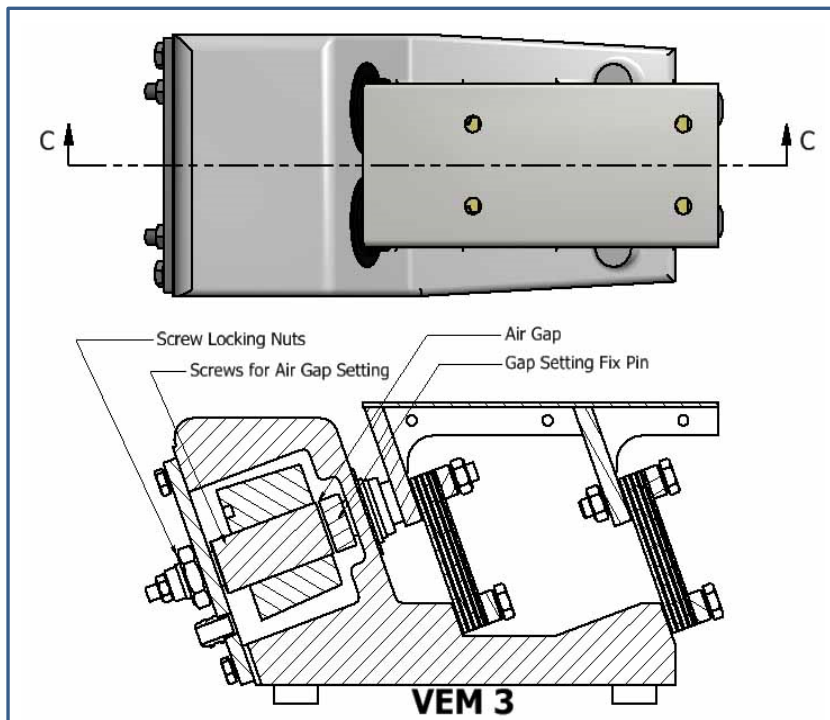


VEM 3 TECHNICAL DIMENSIONS :

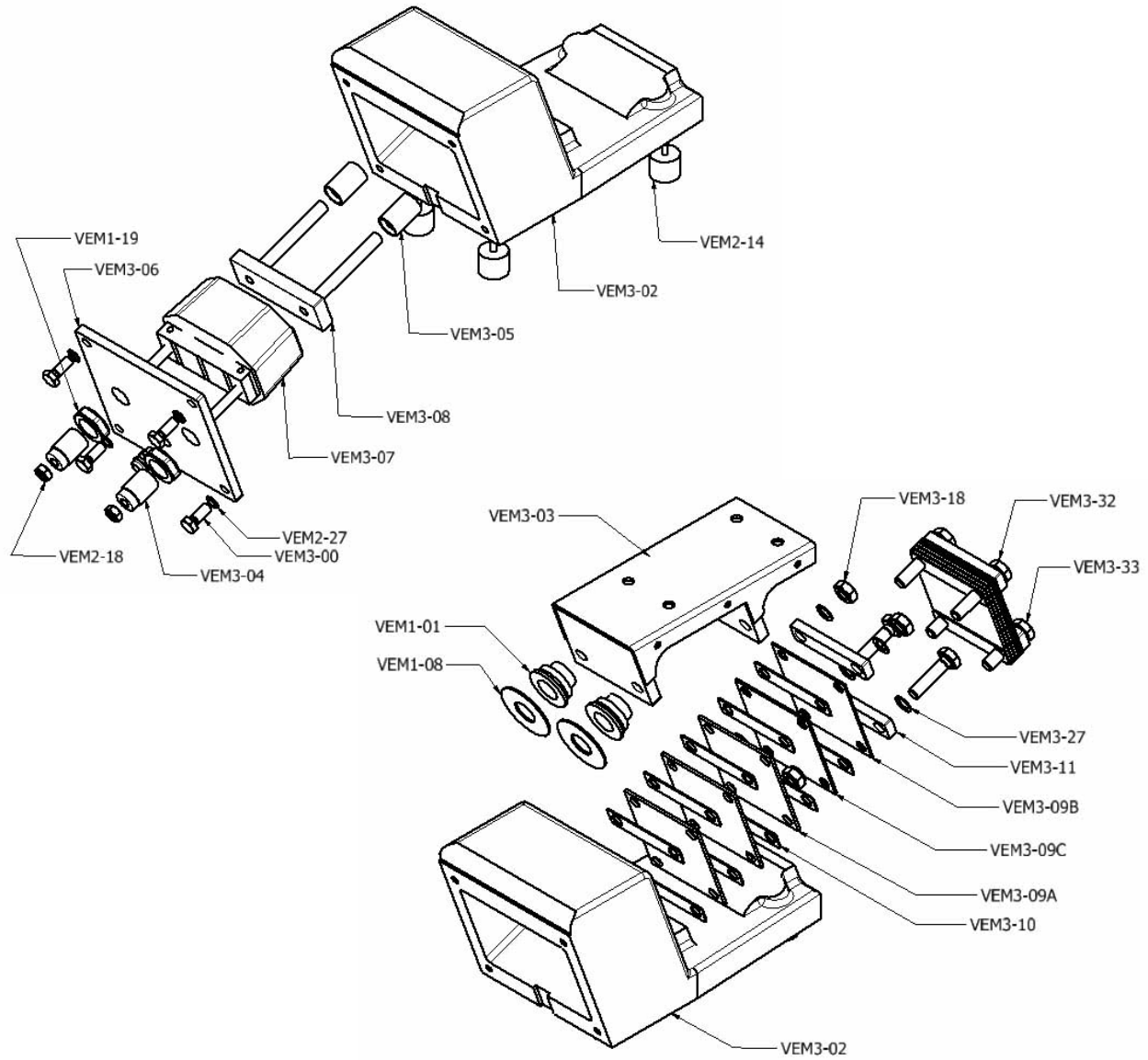


AIR GAP ADJUSTMENT :

- Depending on product and its speed of feeding, air gap adjustment is very important.
- The air gap is the spacing that exists between the armature and magnet assembly.
- Back side of vibrator there is a nut. Loose the nut before starting adjustment.
- Screw the screws clockwise, until it comes to the end of the stroke and so right in time with the drive. Loosen the screw counter clockwise, with reference to table ' Mechanical Spec.', determine the adequate air gap for your feeder. So turn the screw so many times as necessary to obtain the required air gap. Tighten the nut to maintain the set screw tightly.



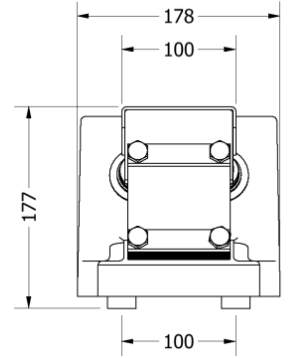
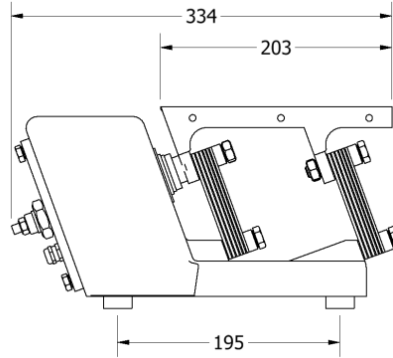
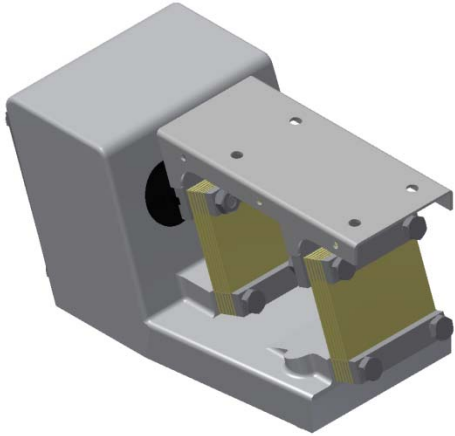
VEM 3 PARTS :



ITEM	DESCRIPTION	QUANTITY
VEM1-01	Silicon Reduction	2
VEM3-02	Static Equipment, Body	1
VEM3-03	Trough	1
VEM3-04	Screw for Air Gap Setting	2
VEM3-05	Gap Setting Fix Pin	2
VEM3-06	Seating Coil Cover	1
VEM3-07	Coil	1
VEM3-08	Armature	1
VEM1-08	Silicon Ring	2
VEM3-09	Leaf Assembly	6
VEM3-10	Leaf Space Plate	16
VEM3-11	Leaf Fixing Plate	4

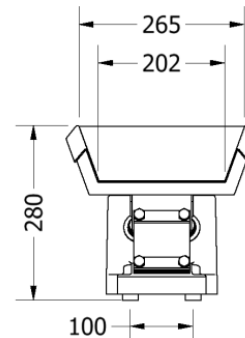
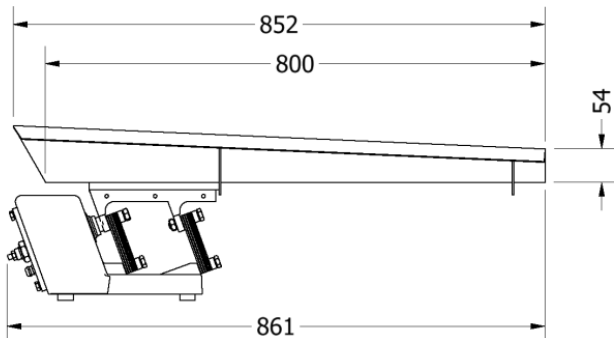
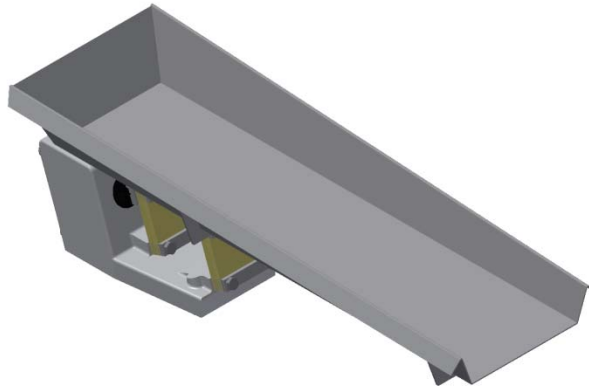
ITEM	DESCRIPTION	QUANTITY
VEM2-14	Antivibrating Leg	4
VEM1-16	Anti Electric Cable	1
VEM3-18	M10 Nut	4
VEM2-18	M8 Nut	2
VEM1-19	M20 Nut	2
VEM1-22	Pg 7 Cable Gland	1
VEM2-27	M8 Spring Washer	4
VEM3-27	M10 Spring Washer	10
VEM1-31	M5x16 Bolt	2
VEM3-31	M8x20 Bolt	4
VEM3-32	M10x50 Bolt	2
VEM3-33	M10x40 Bolt	4

VEM 4 ELECTROMAGNETIC VIBRATOR

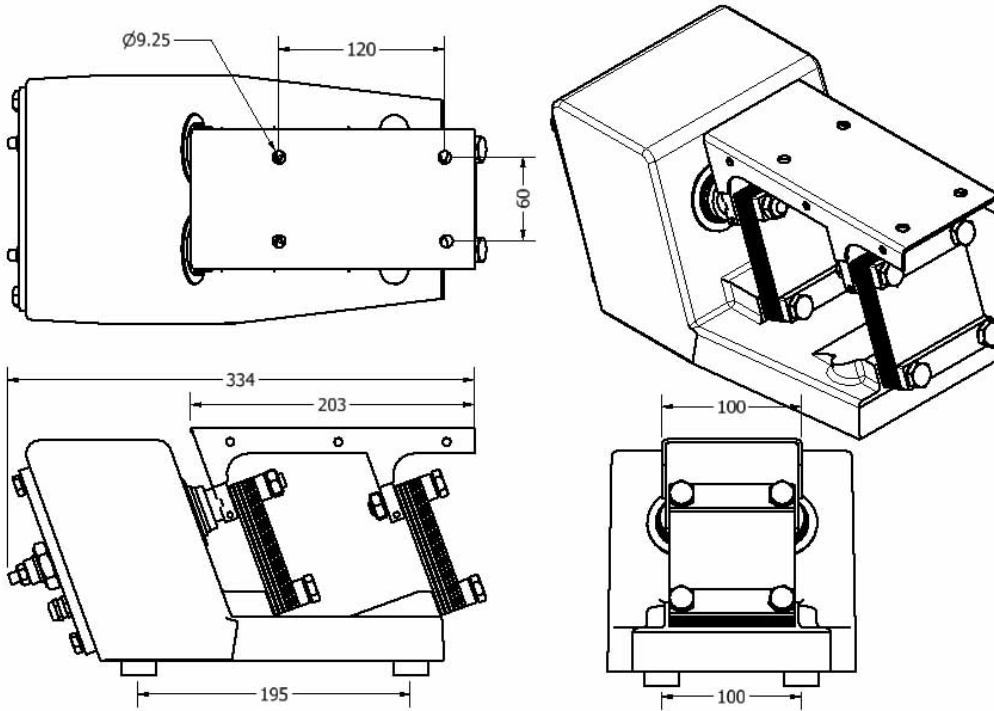


- All metallic parts in 304 stainless steel,
- Fibreglass springs lifetime guaranteed,
- Heat resistant sealings, (250° C)
- Water and heat resistant coil
(with polyurethane resin 200° C)
(with polypropylene housing 120° C)
- Single screw for air gap adjustment
- High or slow speed selection,
- Frequency range 3000 rpm – 6000 rpm
- Sensitive adjustment with potentiometer

Power	:	61 Watt, 138 VA
Voltaj	:	220 V, 50 Hz
Current	:	0,65 Amps
Weight	:	26 kg
Capacity	:	7 ton/hour
Max. Tray Weight	:	10,0 kg

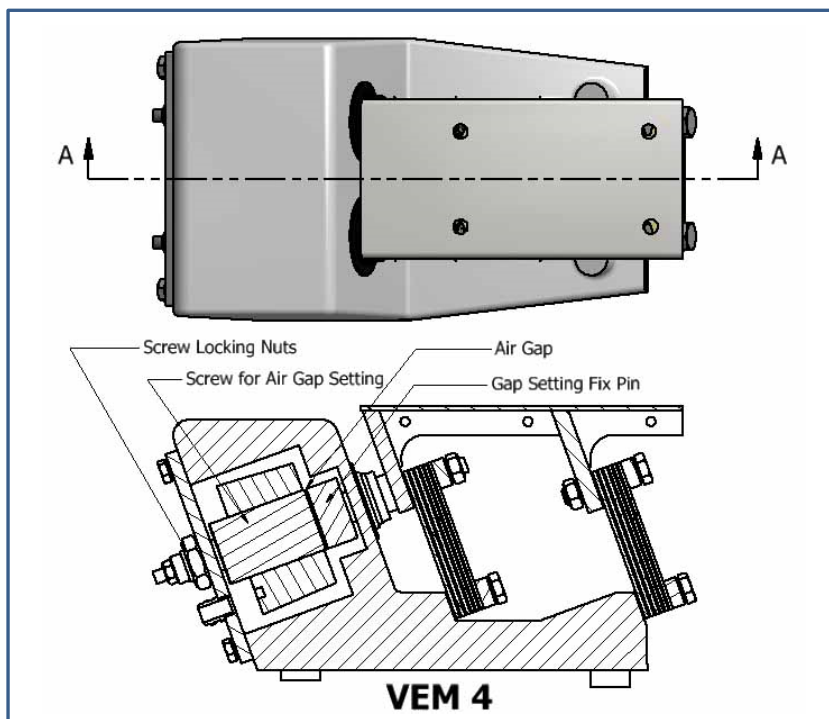


VEM 4 TECHNICAL DIMENSIONS :

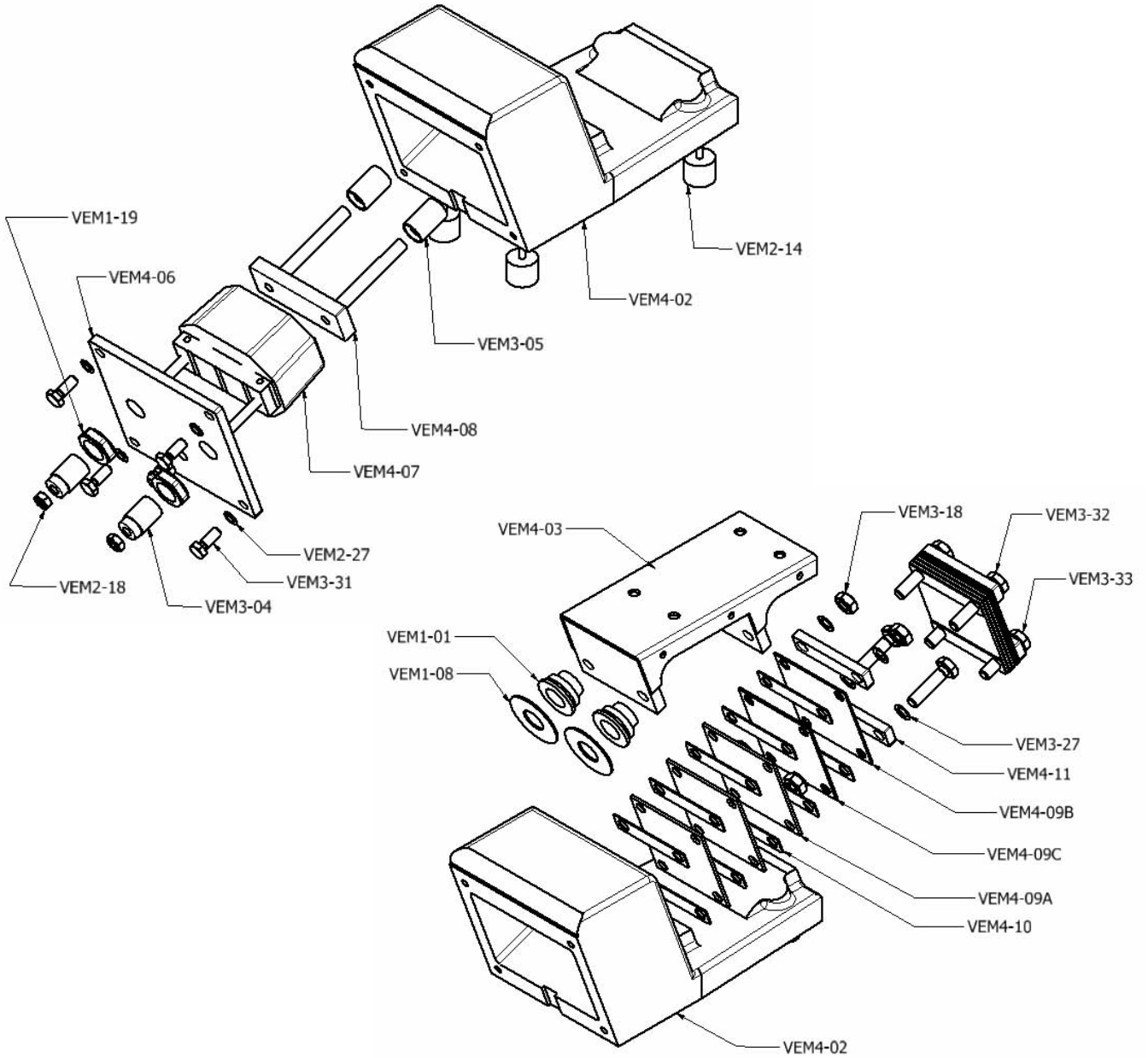


AIR GAP ADJUSTMENT :

- Depending on product and its speed of feeding, air gap adjustment is very important.
- The air gap is the spacing that exists between the armature and magnet assembly.
- Back side of vibrator there is a nut. Loose the nut before starting adjustment.
- Screw the screws clockwise, until it comes to the end of the stroke and so right in time with the drive. Loosen the screw counter clockwise, with reference to table ' Mechanical Spec.', determine the adequate air gap for your feeder. So turn the screw so many times as necessary to obtain the required air gap. Tighten the nut to maintain the set screw tightly.



VEM 4 PARTS :



ITEM	DESCRIPTION	QUANTITY
VEM1-01	Silicon Reduction	2
VEM4-02	Static Equipment, Body	1
VEM4-03	Trough	1
VEM3-04	Screw for Air Gap Setting	2
VEM3-05	Gap Setting Fix Pin	2
VEM4-06	Seating Coil Cover	1
VEM4-07	Coil	1
VEM4-08	Armature	1
VEM1-08	Silicon Ring	2
VEM4-09	Leaf Assembly	6
VEM4-10	Leaf Space Plate	16
VEM4-11	Leaf Fixing Plate	4

ITEM	DESCRIPTION	QUANTITY
VEM2-14	Antivibrating Leg	4
VEM1-16	Anti Electric Cable	1
VEM3-18	M10 Nut	4
VEM2-18	M8 Nut	2
VEM1-19	M20 Nut	2
VEM1-22	Pg 7 Cable Gland	1
VEM2-27	M8 Spring Washer	4
VEM3-27	M10 Spring Washer	10
VEM1-31	M5x16 Bolt	2
VEM3-31	M8x20 Bolt	4
VEM3-32	M10x50 Bolt	2
VEM3-33	M10x40 Bolt	4